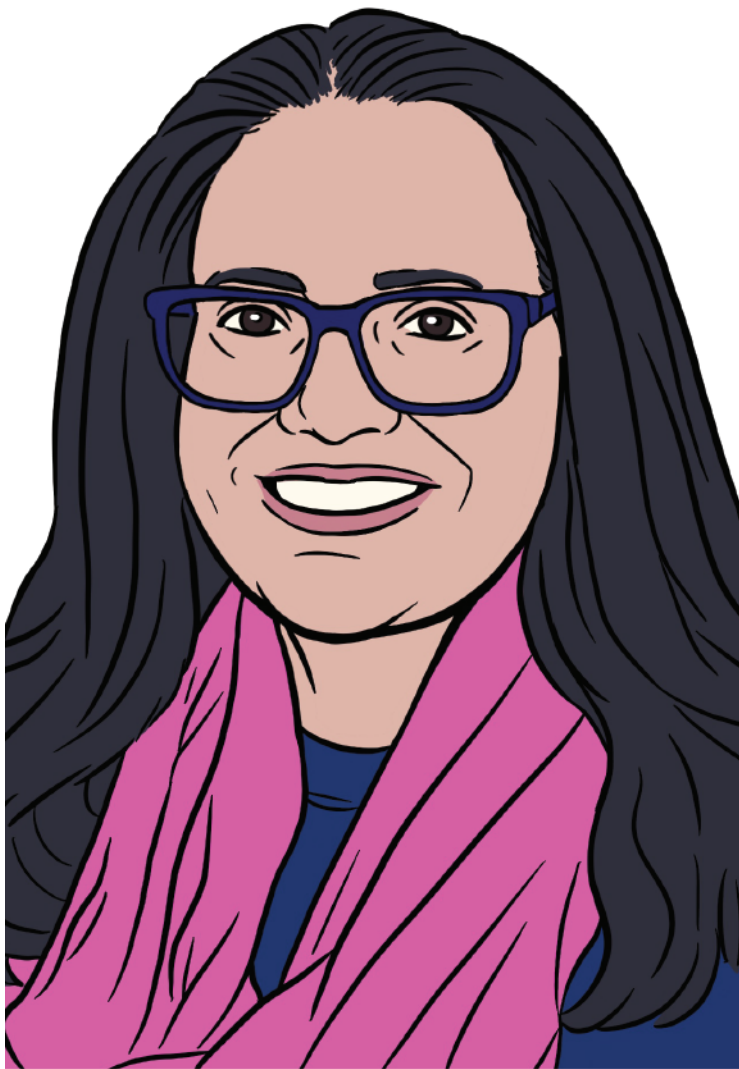


Suzanne Sindi

(b. 1970s)



A daughter of immigrants, Sindi grew up in California and earned her BA in mathematics from CSU-Fullerton (2001). She earned her PhD from the University of Maryland, College Park (2006), did postdoctoral work at Brown University, and is currently Professor and Chair of Applied Mathematics at UC Merced. Sindi's primary research is in the use of mathematical models to gain insight into biological systems such as protein aggregation disease and blood coagulation. Her work has been funded by the NSF and NIH (including a prestigious R01 grant). She co-founded W-STEM, a mentoring & advocacy program at UC Merced. She also organizes AWM workshops at SIAM meetings and promotes professional development at SACNAS.

This poster is part of the EvenQuads project, which combines innovative mathematical card games with learning about amazing women mathematicians. The project celebrates the 50th anniversary of the Association for Women in Mathematics.

If you want to learn more about EvenQuads, scan the QR code below.

EVENQUADS

