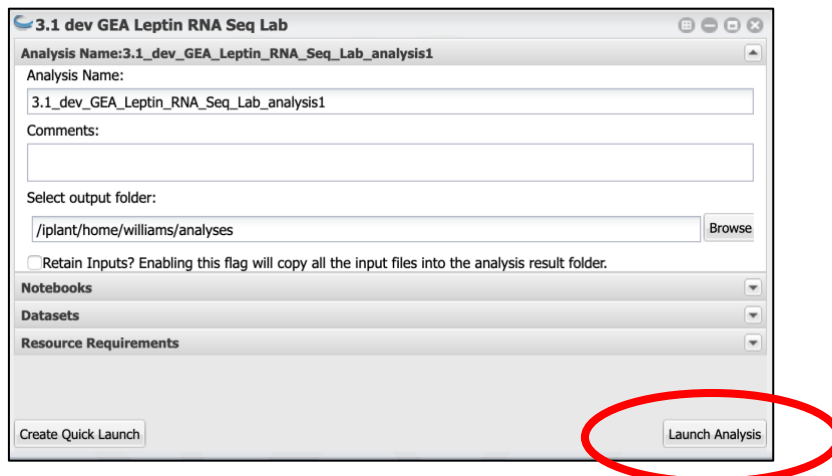


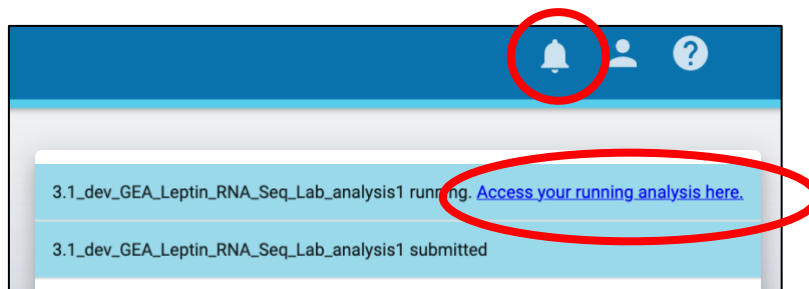
Instructions for the RNA-Seq Leptin lesson on CyVerse Discovery Environment

We recommend getting your CyVerse account at least a day before the workshop (step 1). Launching the lesson only takes a few minutes so you can do this shortly before the workshop.

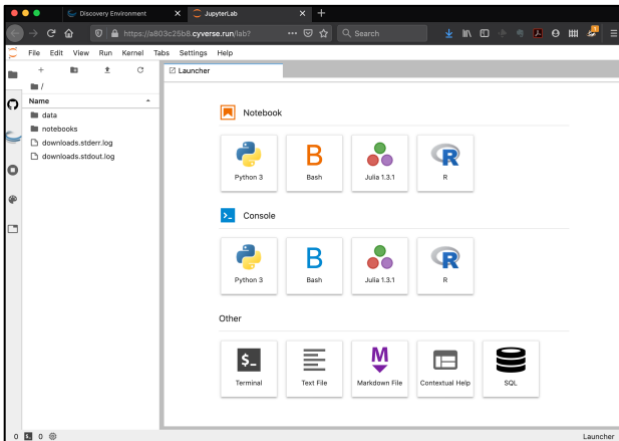
1. Register for a free CyVerse account at <https://user.cyverse.org/>
2. Once you have verified your account, click on this link to open the Discovery Environment (you may need to login): [https://de.cyverse.org/de/?type=quick-launch&quick-launch-id=76138a2c-3b6b-4494-b79a-7f5200b2b237&app-id=2b9d31fe-3162-11ea-a78a-008cfa5ae621target=%22 blank%22](https://de.cyverse.org/de/?type=quick-launch&quick-launch-id=76138a2c-3b6b-4494-b79a-7f5200b2b237&app-id=2b9d31fe-3162-11ea-a78a-008cfa5ae621target=%22%20blank%22)
3. When the **3.1 dev GEA Leptin RNA Seq Lab** app launches, click **Launch Analysis**



4. In your notifications, click the link to your running application (may take a few minutes to load)



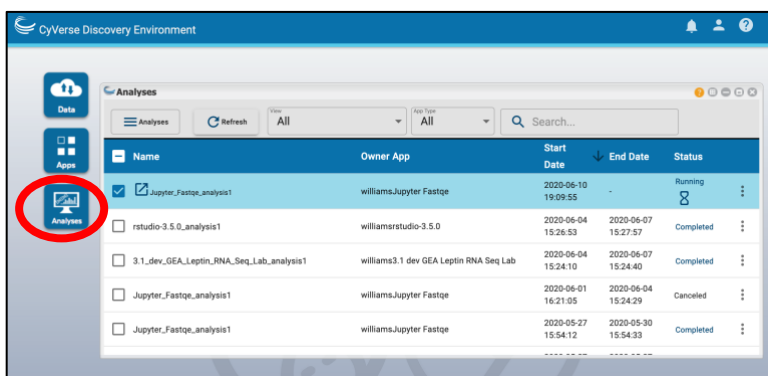
5. A new browser tab with the **Jupyter Lab** (<https://jupyter.org/>) interface will load



6. Follow the directions in the notebook to complete the lesson (<https://cyverse-leptin-rna-seq-lesson-dev.readthedocs-hosted.com/en/latest/index.html>)

Finishing up with the notebook

7. When you are done with the notebook, you can export your results from the Jupyter lab interface's **File** menu (for example you can export the notebook as a markdown document) Right-clicking the notebook file menu will allow you to download the notebook. **Note:** Some export features such as export to PDF are not enabled.
8. In the CyVerse Discovery Environment, you can go to the **Analyses** panel, and select your **3.1 dev GEA Leptin RNA Seq Lab** job; then click the **Analyses** menu to close Complete and Save Outputs – this will save a copy of any modified files you have created.



Note: Notebooks will automatically shut down 48 hours from launching. Any changed files will be saved to your **Data** folder in the Discovery Environment.