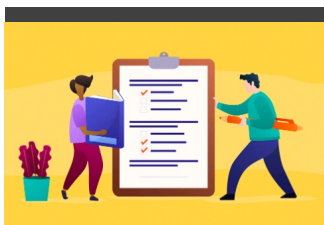


[Visit QUBES Hub](#)

Moving a Project to a Collaborative Space? How can QUBESHub help?



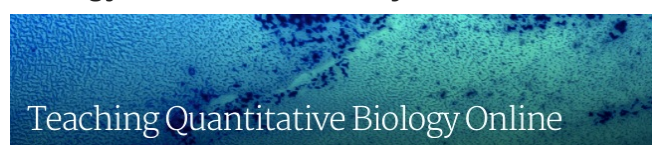
[Use this 6-question survey](#) to communicate your needs for planning. The QUBESHub Team will respond, helping to support you to take your conference or project online.



- [What a semester! Teaching Quantitative Biology Online: Here for the Community](#)
- [Become a BIOME Fellow: The Biology and Mathematics Educators \(BIOME\) Institute 2020](#)
- [Leading a STEMEd project? Interested in inclusion and universal design?](#)
- [STEM Inclusive Teaching Practices Webinar Series](#)
- [Call for Fall 2020 Faculty Mentoring Networks](#)

These weekly, mini-Newsletters were intended to provide resources to support the community during the rapid, nationwide transition to faculty completing courses online. As the semester closes down, we want to reflect on the successes of the last few months, and think about next steps as we plan for fall. Please continue to let us know how QUBES can support the community.

Next Steps for the *Teaching Quantitative Biology Online* Community



The [Teaching Quantitative Biology Online](#) site was launched on March 12, 2020 to support faculty in the rapid transition to remote teaching, providing a community forum, where faculty could share resources, ask questions and find useful information as institutions around the country shifted abruptly to remote teaching in response to the COVID 19 pandemic.

- [Collections of activities](#) that could be used online easily were established, as well as information about teaching effectively online.
- Open Education Resources (OERs) from a variety of QUBES' [partner projects are collected in the resources](#).
- Developers of these OERs provided quick [ten minute video walkthroughs](#) to show faculty how to use their materials.
- Generous [volunteers set up office hours](#) to support

colleagues with questions.

- Many people shared information about [resources and webinars in the blog](#).
- Many people chose to join the group so that they could receive the forum and blog posts via email.

The QUBES newsletter was published weekly to keep the community informed of resources and opportunities in support of the transition to emergency online teaching, using resources gathered through this site or shared with us by our partners.

This crisis has demonstrated the importance of community, even as our most familiar forms of community interactions have been restricted. As faculty around the country, and around the world, rose to the challenge of revising courses and adapting to new teaching conditions, the ability to ask for help from the community and use OERs generated by community members has made the task a little easier. We are grateful to all the volunteers who supported the community with their time and shared educational resources.

As we move forward into online Summer and uncertain Fall teaching situations, QUBES and BioQUEST will continue to support the community with resources, information, and opportunities. The newsletter will return to monthly publication, and the Teaching Quantitative Biology Online site will continue to welcome new members and share resources for online teaching. We invite you to join the group, contribute to the collections, and share information through the forum.

Thank you for being a part of our community. Stay safe and healthy.

QUBES & BioQUEST Staff

PS Suggestions for how we can better support you? Post in the Teaching Quantitative Biology Online forum, or use the "Wish List" (the lightbulb icon in the left hand menu).



Become a BIOME Fellow! The Biology and Mathematics Educators (BIOME) Institute 2020

Become a [BIOME Fellow](#)!

BioQUEST and QUBES are offering the BIOME Institute, an online, sustained, community-based

professional development experience to support faculty interested in using undergraduate research experiences (UREs) to improve student success, both in person and online. Explore URE models from lecture based activities to internships in the Summer Launch, and collaborate with peers in the Fall working groups to generate a well designed implementation plan for your URE.

Who should apply?

Individuals from all biological disciplines, as well as quantitative, physical and social sciences will find the Institute valuable. Disciplinary and interdisciplinary institutional teams are encouraged to apply. Future faculty are welcome and are encouraged to partner with a faculty member at their institution. Substantial scholarships are available to defray registration costs.

Institute Dates

Summer Launch: July 27-August 7

Fall Working Groups: September 7-November 20

Application deadline: June 15. For more information, visit the [BIOME Institute website](#).

Join the STEM Project Leaders Inclusivity NETwork (SPLINE) Program

Realizing the promise of open, inclusive, universal STEMed

Are you trying to make your education project more inclusive and effective for everyone, but aren't 100% sure how to actually do that?

QUBES is working to more systematically integrate Inclusivity and Universal Design for Learning into what we do. We invite you to join us as we continue to learn how to reach more students and faculty. By working together across projects, with guidance from expert mentors, we can all progress farther, faster.

Join us for the
STEM Project Leaders Inclusivity NETwork (SPLINE) Program

What is SPLINE?

- A network of leaders of STEM education reform projects or initiatives,
- A place to consider how diversity, equity, inclusion, and UDL intersect with open education,
- A community of peer support; a place to bounce ideas, get feedback, and brainstorm,
- A safe place to talk about the hard stuff!
- A late-summer program of one hour weekly synchronous meetings supplemented with an online platform for discussions, material collections, and collaborative work,
- A chance to apply best practices in Inclusivity and Universal Design for Learning to your resources or practices, with guidance from experts and peers,
- Improve one thing, and build confidence and momentum. Take a bite of the elephant.

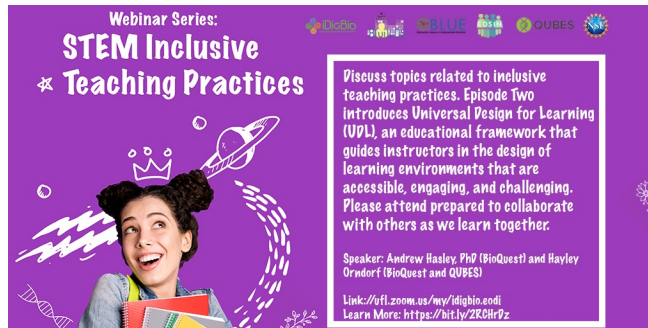
What are the benefits?

- Clear evidence that your project is trying to reach the broadest range of students and faculty,
- Guidance and expertise,
- A participant stipend of \$500 and a title reflecting the commitment (SPLINE Scholar),
- You bring experience in some aspect of the broad range of diversity, equity, inclusion, and universal design issues - get credit for sharing your hard-earned wisdom in a professional setting,
- An offer of continued support into the fall to expand your work across your project,
- An offer to support a QUBES Faculty Mentoring Network that leverages your work to reach more faculty/students with your improved resources.

I'm intrigued, but also over-committed and tired, and I have questions...

How did we guess? :-) SPLINE will be intentionally small and we will tailor our activities to the needs of the group. Thus, we'd love to have a conversation to answer your questions, and to help us shape a program that meets the needs of the community of STEM Education reformers.

Apply [here](#) by **June 8**. Email Jeremy Wojdak (jmwojdak@radford.edu) with questions, and [click here](#) for the full flyer to share with your networks.



STEM Inclusive Teaching Practices Webinar Series

Please join us on **May 13, at 3:00 pm ET** at [this Zoom Link](#).

Episode Two will introduce [Universal Design for Learning \(UDL\)](#), an educational framework originally developed by CAST that guides instructors in the design of learning environments and educational materials that are accessible, engaging, and challenging for all students. This episode will also offer attendees the opportunity to practice identifying and applying UDL principles to classroom activities. As this episode is designed to be interactive, please attend prepared to collaborate with others as we learn together.

Members of the QUBES team are participating in some re-imagined conferences that will be happening through the QUBESHub. Members of the QUBES team are always looking to meet others who have a passion for quantitative biology education. Reach out so we can help you gather your collaborators, move projects forward, and continue to move quantitative biology forward. [Connect with us by submitting a support ticket](#)



From left to right: Sam Donovan (Director of OER), Carrie Diaz Eaton (Director of QUBES Consortium), Kristin Jenkins (Director of BioQUEST), Drew LaMar (Director of Cyberinfrastructure), and Jeremy Wojdak (Director of Professional Development).

Do you have a product or result from a QUBES sponsored activity? Help us measure our success by [sharing your product or result with QUBES](#). [Learn how to cite QUBES](#).



Call for Fall 2020 Faculty Mentoring Networks

Faculty Mentoring Networks ([FMNs](#)) are long-term, low-intensity professional development opportunities hosted through QUBES. An FMN brings a small group of like-minded educators together to discuss pedagogy; share resources; adapt, implement, and share teaching materials; and create a community around a given topic. FMNs can broaden the impacts of your project, click [here](#) to see how!

We are currently recruiting for Fall 2020 FMNs with commitments needed by June 1. If you are interested in running one, please contact [Deb Rook](#) soon!



Copyright © 2024 BioQUEST, All rights reserved.
19 Glen Ridge Rd, Raymond NH 03077

You are receiving this email because you opted in to our newsletter mailing list.

[Subscribe / Unsubscribe](#) from mailing list

[View newsletter on QUBES Hub](#)

BioQUEST/QUBES Newsletter: Issue 30